



SVI-IMG-5300



NILPA CONSULTANCY

Tel. : + 91 (22) 2828 2830, 5627 6362 Fax : 2828 0397
Mobile : 9821424481 Email : nilpacon@vsnl.com

2/B, Shobhana Apartment,
K. V. Road, Off W. S. Road,
Dahisar (E), Mumbai - 400 068.

SPECIFICATIONS :-

Model No:	SVI-IMG-5300
Software	QC-300 MSU25D QC-5300
Measuring Range	150 X 100 X 100
Resolution	0.005 / 0.001 / 0.0005 mm
Linear Accuracy	(3+L/200) micron
Repeatability	+/- (0.002) mm
Vision	1/3" High Resolution CCD Camera
Magnification	Optical Magnification 0.7x - 4.5x
Video Edge Detection	Standard
Optional Hardware	PC P4 + 17" TFT Monitor
Illumination Surface	Fibre Optic / LED
Illumination Contour	Halogen Lamp / LED
Operation	Manual with Quick Release Knob
Base Platform & Column	Metal Base
Platform load capacity	15 kg
Power Supply	220-240 V + /- 5%, 50/60 HZ
Motion Control through Joystick	Optional
Programmable Light Control	Optional
Touch Probe	Optional
Non-Linear Error Correction	Optional Optional Optional



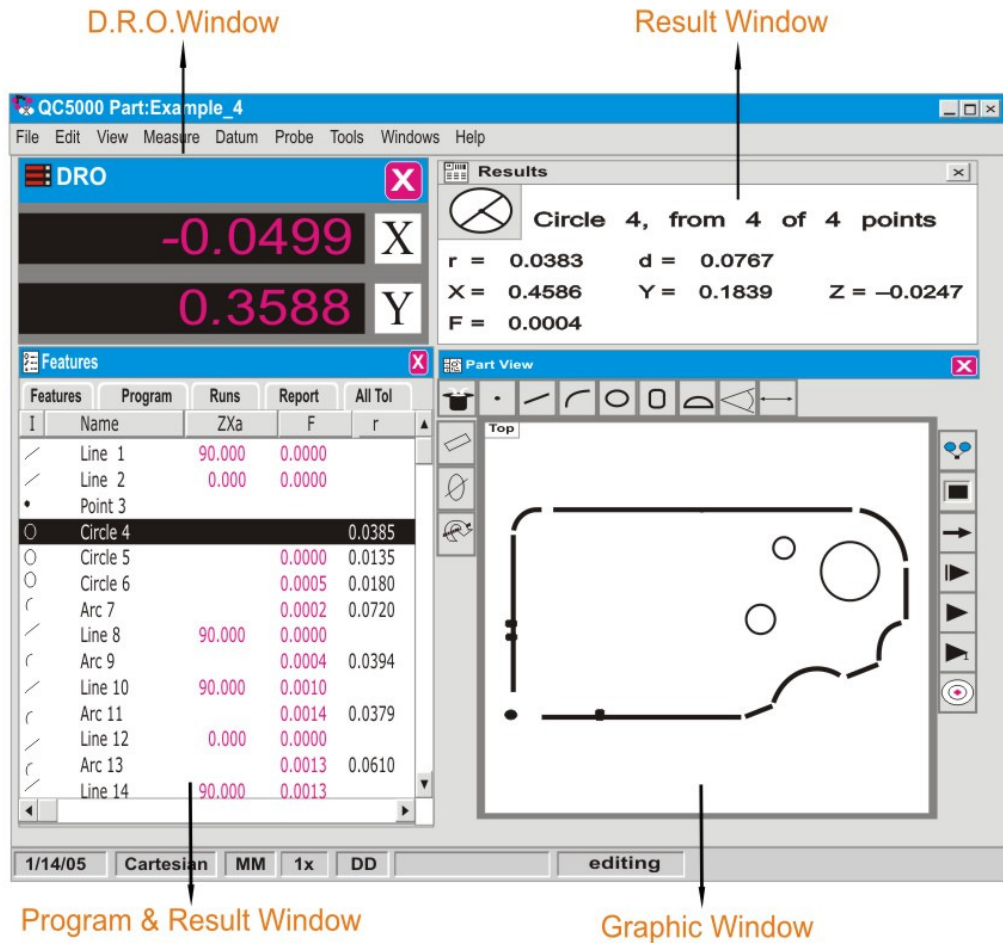
NILPA CONSULTANCY

Tel. : + 91 (22) 2828 2830, 5627 6362 Fax : 2828 0397
Mobile : 9821424481 Email : nilpacon@vsnl.com

2/B, Shobhana Apartment,
K. V. Road, Off W. S. Road,
Dahisar (E), Mumbai - 400 068.

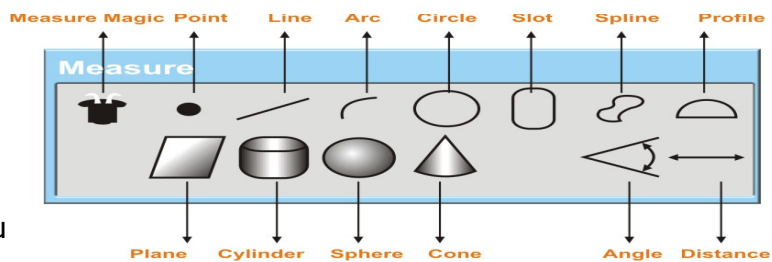
Measuring Software QC-5000

Software Desktop

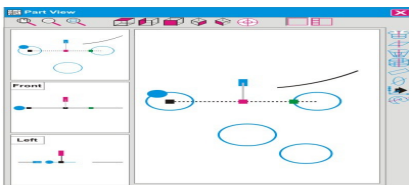


Measurement Toolbar

One click options to measure all types of 2D features. With patented feature Measure Magic probe any feature, enter points and with a click QC-5000 knows without you telling it whether you are measuring circle, arc, or another shape.



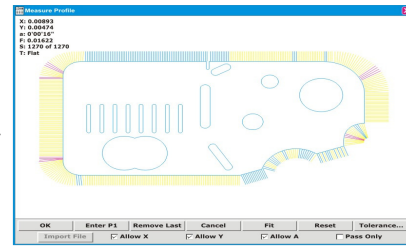
Graphical Representation



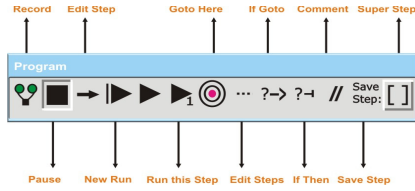
Graphical Representation in all the possible views-Top, Left, Front, South east etc. The graph is fully interactive for fast constructions and relationships. For example, to measure the distance between two circles, just select the distance function, then click on two circles in part view window. There's your answer. It's that simple.

Feature stamp for deviation analysis

Along with the shape and numerical data about the features, this software will also tell you point uses to construct the feature with tolerance markings for each of the points



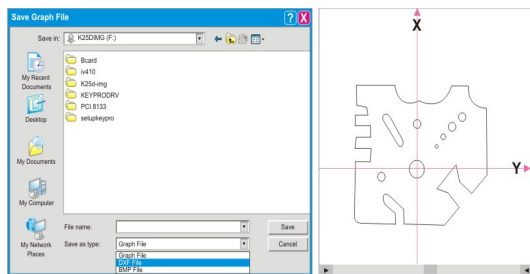
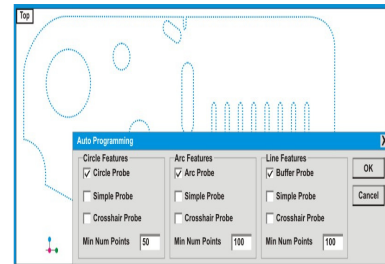
Programming



Simplify difficult and repetitive measurement sequences with an easy to use and robust programming interface. Programming steps are in English language which are easy to understand and edit. Edit any step, add any step, use normal conditional statement like if-then, else-then & lots more.

Auto programming from DXF File

Import CAD files to automatically create part programs. This eliminates the necessity of using the actual workpiece to program and thereby eliminates long teaching sessions for every new part



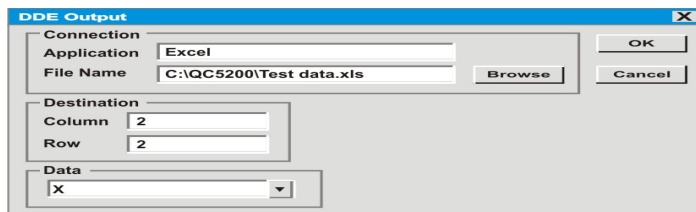
Data Management - Export & Import

Internal Communication tools enable operators to record, store and analyze the measurement data. Operators can also export data to online database for offline analysis by quality control specialists. Export options include .dxf, .csb, .igs, .tdf, MS-Excel, MS-Access & SPC. Import options include .dxf, .igs, .asc, .sac

Tolerance types

Support more than 15 types of tolerance settings with display in color coded pass and fail output. If there's a part or feature that doesn't measure up, you will know it immediately. Not only are all out of tolerance features displayed in red, but an audio alert signals if what you are measuring fails to match the specifications.

- LOCATION
- SIZE
- FORM
- ORIENTATION
- Bidirectional
- Length
- Straightness
- Parallelism
- True position
- Radius
- Roundness
- Perpendicularity
- MMC
- Angle
- Flatness
- RUNOUT
- LMC
- Width
- Cylindrically
- Circular
- Concentricity



Dynamic Data Exchange

Dynamic Data Exchange facilities Real time data transfer to various applications like Microsoft Excel, MS Access and other making real time



NILPA CONSULTANCY

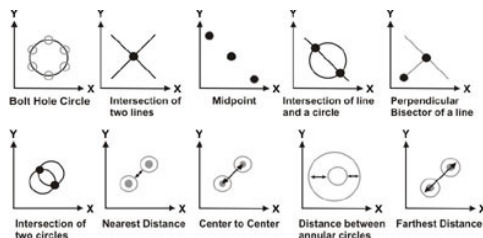
Tel. : + 91 (22) 2828 2830, 5627 6362 Fax : 2828 0397
Mobile : 9821424481 Email : nilpacon@vsnl.com

2/B, Shobhana Apartment,
K. V. Road, Off W. S. Road,
Dahisar (E), Mumbai - 400 068.

Report generation

Fully customizable report format with color coded Pass/Fail for tolerance parts. The flexibility of this report generator will not only help you to conform to your ISO specifications, but will enable you to send data directly to an ASCII file or SPC program that you may already have. Customize results field for special measurement needs and complex calculations by embedding formulas (e.g. Automatically calculate area or circumference dimensions with each circle measurement).

Features	Runs	AllTol	Program							
I	I	Name	Nominal/Zor	Actual	Dev	Lo Lim	Hi Lim	---	/	+++ Bonus/Ref
		Line 1								
		Line 2								
		Point 3								
		Arc 4	TP 0.0100	0.0000	0.0000	0.0000	0.0100	I	I	0.0000
		TP	0.0457	0.0457	0.0000	0.0440	0.0470	I	I	-
		Line 5	f 0.0010	0.0005	0.0005	0.0000	0.0010	I	I	-
		Arc 6	f 0.0010	0.0004	0.0004	0.0000	0.0010	I	I	-
		Line 7	f 0.0010	0.0000	0.0000	0.0000	0.0010	I	I	-
		Circle 8	f 0.0010	0.0006	0.0006	0.0000	0.0010	I	I	-
		Circle 9	f 0.0010	0.0001	0.0001	0.0000	0.0010	I	I	-



Construction capabilities

Select two or more features to create intersections or constructions. Reduces operator effort by eliminating confusing construction menus.