

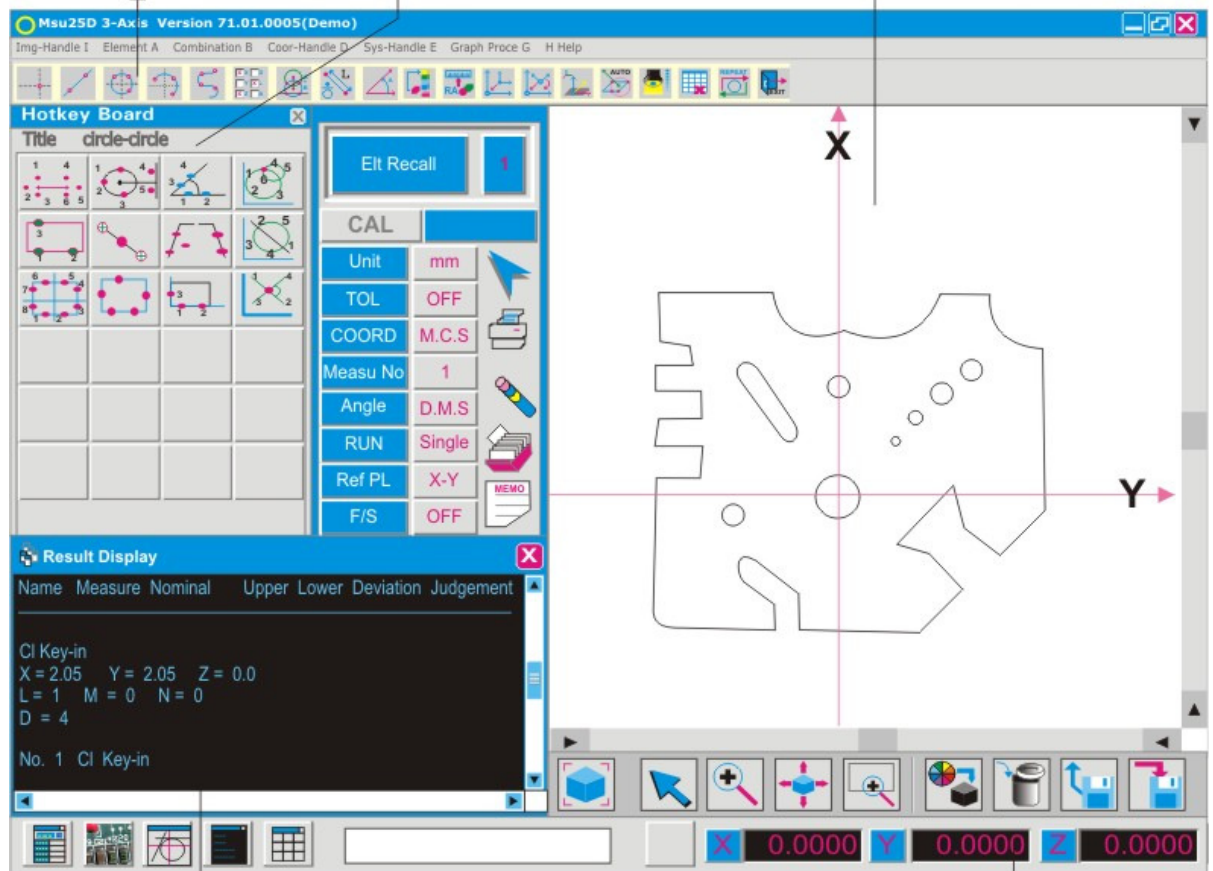
Measuring Software SIPMEAS

Software Desktop

Menu Bar

Hot key Board

Graphical Display

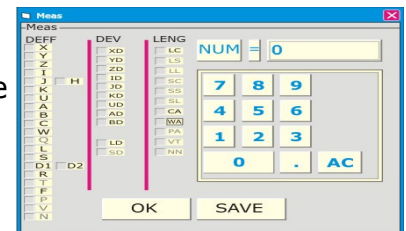


Intelligent Result Display

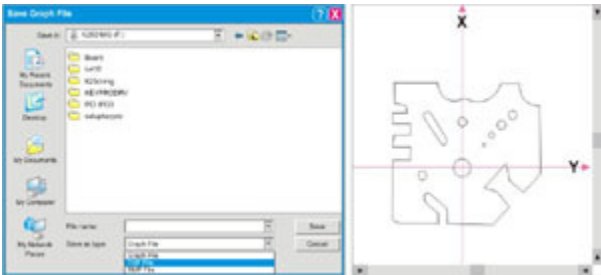
D.R.O

Fast Multi Datum Output

You can do more than one measurement at the same time by setting the options in this window. For example you are measuring the distance between the two circles and at the same time you want the angle of the distance line with the x axis just set the options, you will get both result with just one click.



Data Management-Export and Calculations

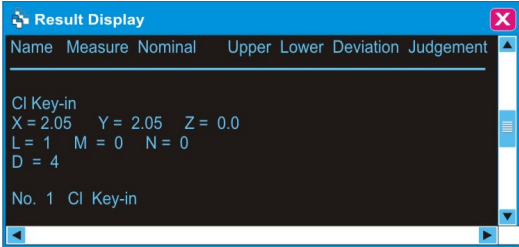
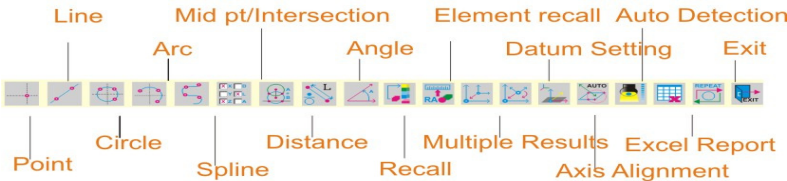


Directly saving graphs as DXF or IGS files makes it possible to export our measurement to CAD and CAM for further editing. You can also "Click" the features in the graph to calculate the measurement between the elements. For example to measure the distance between the 2 circles in the graph just click the distance button and then click the two circles from the graph. The result is on the screen

Other Features

1. Inch/Metric Conversion
2. Up to 500 points allowed on each feature
3. Auto Recognition : Just input the points it will tell you what feature is this.
4. Both Cylindrical and cartesian coordinate system.
5. Angle display in Degree-Min-Sec or Decimal Degree.

Menu Bar

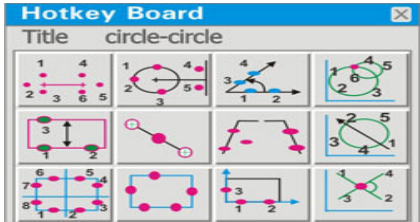


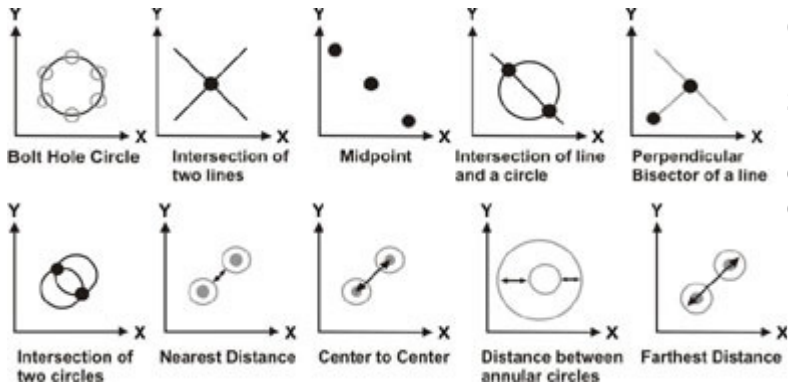
Tolerance Setting & Result Display

Support more than 10 types of Tolerance setting including group Tolerancing (Circularity, Concentricity, Perpendicularity, Parallelism etc.) and Result window will display all the results with tolerance values and will give an indication for PASS or FAIL features.

Program Hotkey Board

Customize the series of measurements according to your part and make an icon for it. Next time just press it and start the measurement. So with this software just measure one part for the others it will guide you how to measure.





Construction capabilities

Select two or more features to create intersections or constructions. Reduce operator effort by eliminating confusing construction menus.