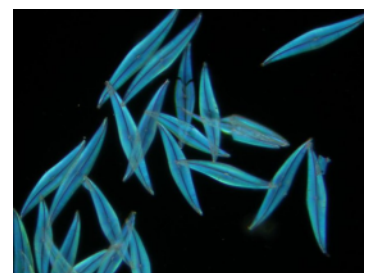
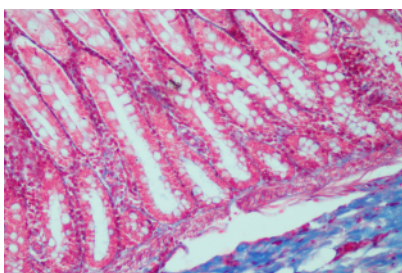


medicus plus

The Microscope for Medical Practice and Biological Examinations



Save investments: Reliable microscopic results with expert consultancy

Precise optics, robust mechanics

One microscope for every application

- Examinations of blood, tissue sections and smears in brightfield
- Examinations of urine sediments, bacteria and cell cultures in phase contrast and/or darkfield

Ergonomy

Comfortable microscopic work due to

- adjustable Siedentopf-type observation tube with optimal viewing angle,
- ergonomically arranged control elements for focusing and stage movement

Sharp images all over the field of view

- Plan achromatic brightfield objectives 4x/10x/40x/100x
- Plan achromatic phase-contrast objectives 10x/40x

Documentation? Easy!

- Trinocular tube for direct camera attachment
- Adapter for C-Mount cameras with 1/2" sensors

Technical data

Stand	Solid cast-metal stand
Focusing drive	Coaxial coarse and fine focusing drives Max. travel of coarse focusing drive: 12.7 mm Resolution of fine focusing drive: 3 µm per scale division
Observation tube	Binocular, Siedentopf type Observation angle 30° Tube factor 1x Interpupillary distance 55 mm - 75 mm Diopter correction on both eyepiece tubes
Nosepiece	Quadruple
Objectives	Plan achromatic, infinity-corrected: Plan 4x/0.10 Plan 10x/0.25 Plan 40x/0.65, spring-loaded Plan 100x/1.25 Oil, spring-loaded Plan Phase 10x/0.25 Plan Phase 40x/0.65, spring-loaded
Microscope stage	Size 200 mm x 160 mm, travel range: 78 mm x 54 mm Specimen holder for up to two slides, rackless drive
Condenser	Abbe type, NA 1.25, with apertur diaphragm and attachable filters Height-adjustable
Illumination	Halogen lamp 6 V / 20 W
Mains voltage	110 V - 240 V

Änderung der technischen Daten ohne Vorankündigung möglich.

Helmut Hund GmbH
Artur-Herzog-Str. 2
D-35580 Wetzlar
Tel. +49 (0) 6441 2004-0
Fax +49 (0) 6441 2004-44
info@hund.de
www.hund.de

hund
WETZLAR