

Microscope



J 7 SERIES

Monocular

Binocular

Trinocular



SPECIFICATION		J7	J7A
Viewing Head	Sliding Binocular Head	•	•
	Sliding Monocular Head	○	○
	Sliding Trinocular Head	○	○
	Seidentopf Binocular Head	○	○
	Anti-mould	○	•
Eyepiece	WF10X	•	•
	P16X	○	○
Nosepiece	Quadruple Nosepiece	•	•
	Quintuple Nosepiece	○	○
Objective	Achromatic Objective	•	•
	4X, 10X, 40X, 100X	•	•
Stage	Double Layers Mechanical	•	•
	Stage 140X140mm/ 75X50mm	•	•
Condenser	Abbe NA1.20 with Iris	•	•
	Diaphragm & Filter	•	•
Focusing System	Coaxial Coarse and Fine	•	•
	Adjustment, Fine Division 0.002mm, Coarse Stroke 37.7mm per Rotation, Fine Stroke 0.2mm per Rotation, Moving Range 28mm	•	•
Armrest	Black Armrest	○	•
Rubber Cover	Rubber Cover for Focus	○	•
	Adjustment Knob	○	•
Illumination	S-LED Illumination, Brightness	•	•
	Halogen Lamp 100V-240V/ 6V	○	○
	Plan-concave Mirror	•	•
Package	Styrofoam	•	•
	Carton	•	•
	Wooden Case	○	○

ISO 9001:2015
certified company

NILPA CONSULTANCY
20-ORCHID PLAZA PREMISES, RAMKUWAR THAKUR ROAD,
BESIDE MOVIE TIME THEATRE,
DAHISAR (EAST), MUMBAI-400068-INDIA
TEL: (+91) (22) 2828-2830 , 20891157
Mobile: 9323271441 EMAIL: info@nilpaconsultancy.in
nilpacon@yahoo.com

Microscope



J 17 SERIES
Binocular
Trinocular
&
various camera
attachment

SPECIFICATION		J7	J7A
Viewing Head	Sliding Binocular Head	•	•
	Sliding Monocular Head	○	○
	Sliding Trinocular Head	○	○
	Seidentopf Binocular Head	○	○
	Anti-mould	○	•
Eyepiece	WF10X	•	•
	P16X	○	○
Nosepiece	Quadruple Nosepiece	•	•
	Quintuple Nosepiece	○	○
Objective	Achromatic Objective	•	•
	4X, 10X, 40X, 100X		
Stage	Double Layers Mechanical	•	•
	Stage 140X140mm/ 75X50mm		
Condenser	Abbe NA1.20 with Iris	•	•
	Diaphragm & Filter		
Focusing System	Coaxial Coarse and Fine	•	•
	Adjustment, Fine Division 0.002mm, Coarse Stroke 37.7mm per Rotation, Fine Stroke 0.2mm per Rotation, Moving Range 28mm		
Armrest	Black Armrest	○	•
	Rubber Cover for Focus	○	•
Illumination	Adjustment Knob	○	•
	5-LED Illumination, Brightness	•	•
	Halogen Lamp 100V-240V/ 6V	○	○
Package	Plan-concave Mirror	•	•
	Styrofoam	•	•
	Carton	•	•
	Wooden Case	○	○

ISO 9001:2015
certified company

NILPA CONSULTANCY
 20-ORCHID PLAZA PREMISES, RAMKUWAR THAKUR ROAD,
 BESIDE MOVIE TIME THEATRE,
 DAHISAR (EAST), MUMBAI-400068-INDIA
 TEL: (+91) (22) 2828-2830 , 20891157
 Mobile: 9323271441 EMAIL: info@nilpaconsultancy.in
 nilpacon@yahoo.com

S 60 LED



S 50 LED

nilpa



Viewing head

Binocular head, 45° inclined, 360° rotating
Binocular head of articulated type. Interpupillary distance 55-75mm, 30° inclined, 360° rotating
Triocular head of articulated type. Interpupillary distance 55-75mm, 30° inclined, 360° rotating

Eyepiece

WF 10X - 18mm
WF 15X - 13mm
WF 20X - 11mm

Achromatic objective

10X achromatic objective 40/NA0.10
40X achromatic objective 100/NA0.25
60X achromatic objective 6000/NA0.65
60X achromatic objective 6000/NA0.65
100X achromatic objective 10000(oil)/NA1.25

Nosepiece

Tight nosepiece with positive click stopper
Quadruple nosepiece with positive click stopper

Analyzer

Built in analyzer group

Stage

Metal stage 127mmX132mm with paired edges
Built in mechanical stage 125mmX130mm with specimen holder, controlled by coaxial knobs at low position

Micromer

1.5mm/100° Rot table and Graduated in 1° increments, Minimum Resolution 0.5° when Using Vernier Scale, Center Adjustable

Condenser

Single Condenser with iris Diaphragm
N.A.1.25/45mm Condenser with iris Diaphragm
N1.25/45mm Condenser With polarizer, can rotate, take the scale

Focusing system

Separate fine & coarse focusing with safe rack stopper
Coaxial fine & coarse focusing, with safe rack stopper

Illuminator

Halogen bulb 6V/20W, AC 95-250V

Optics

Adjustable specimen holder
photo set
Phase contrast set
Dark field condenser set
photo adapter

Viewing head

Binocular head, 45° inclined, 360° rotating
Binocular head of articulated type. Interpupillary distance 55-75mm, 30° inclined, 360° rotating
Triocular head of articulated type. Interpupillary distance 55-75mm, 30° inclined, 360° rotating

Eyepiece

WF 10X - 18mm
WF 15X - 13mm
WF 20X - 11mm

Achromatic objective

10X achromatic objective 40/NA0.10
40X achromatic objective 100/NA0.25
60X achromatic objective 6000/NA0.65
60X achromatic objective 6000/NA0.65
100X achromatic objective 10000(oil)/NA1.25

Nosepiece

Tight nosepiece with positive click stopper
Quadruple nosepiece with positive click stopper

Analyzer

Built in analyzer group

Stage

Metal stage 127mmX132mm with paired edges
Built in mechanical stage 125mmX130mm with specimen holder, controlled by coaxial knobs at low position

Micromer

1.5mm/100° Rot table and Graduated in 1° increments, Minimum Resolution 0.5° when Using Vernier Scale, Center Adjustable

Condenser

Single Condenser with iris Diaphragm
N.A.1.25/45mm Condenser with iris Diaphragm
N1.25/45mm Condenser With polarizer, can rotate, take the scale

Focusing system

Separate fine & coarse focusing with safe rack stopper
Coaxial fine & coarse focusing, with safe rack stopper

Illuminator

LED lamp, Ni-Cd rechargeable battery pack, an AC/DC adapter.
The brightness is adjustable

Option

Adjustable specimen holder
photo set

ISO 9001:2008
certified company



NILPA CONSULTANCY
20-ORCHID PLAZA PREMISES, RAMKUWAR THAKUR ROAD,
BESIDE MOVIE TIME THEATRE,
DAHISAR (EAST), MUMBAI-400068-INDIA
TEL: (+91) (22) 2828-2830, 20891157
Mobile: 9323271441 EMAIL: info@nilpaconsultancy.in
nilpacon@yahoo.com

S 17

S 1000

nilpa



Comfortable observation with adjustable
eye point height and interpupillary

Viewing Head

Compensation Free Binocular Head,
Inclined at 30°, Interpupillary Distance 48-
75mm

Compensation Free Trinocular Head,
Inclined at 30°, Interpupillary Distance 55-
75mm

Eyepiece
WF10x/18

P16x/11

Objective

Achromatic Objective

4x, 10x, 40x, 100x

Nosepiece

Backward Quadruple Nosepiece

Stage

Double Layer Mechanical Stage

132x142mm/ 75x40mm

Focusing

Coaxial Coarse & Fine Adjustment, Moving

Range 24mm, Fine Division 0.004mm

Condenser

Abbe NA 1.20 with Iris Diaphragm & Filter

Abbe NA 1.25 with Iris Diaphragm & Filter

Illumination

S-LED, Brightness Adjustable

Halogen Lamp 6V/ 20W, Brightness

Adjustable

Phase Contrast Kit

Dark Field Attachment

Polarization Attachment

Viewing Head

Siedentopf binocular viewing head, inclined

at 30°, 360° rotatable

Siedentopf trinocular viewing head, inclined

at 30°, 360° rotatable

Eyepiece

WF10x/18

WF16x/11

Objective

Achromatic objective 4x, 10x, 40x, 100x

Plan achromatic objective 4x, 10x, 40x, 100x

Infinite plan achromatic objective

4x, 10x, 40x, 100x

Nosepiece

Quadruple nosepiece

Focusing

Coaxial coarse & fine adjustment, fine

division 0.002mm

Stage

Double layers mechanical stages, cross

travel 78x54mm, using low-positioned X/ Y

coaxial control knob

Condenser

Abbe condenser NA1.25 with aperture

diaphragm

Illumination

S-LED illumination, brightness adjustable

12V/ 20W Halogen lamp, brightness

adjustable Kohler illumination

Optional

Photo attachment, video attachment, dark

field condenser

ISO 9001:2008
certified company



NILPA CONSULTANCY

20-ORCHID PLAZA PREMISES, RAMKUWAR THAKUR ROAD,

BESIDE MOVIE TIME THEATRE,

DAHISAR (EAST), MUMBAI-400068-INDIA

TEL: (+91) (22) 2828-2830 , 20891157

Mobile: 9323271441 EMAIL: info@nilpaconsultancy.in

nilpacon@yahoo.com

S 17

nilpa



Viewing Head
 Compensation Free Binocular Head,
 Inclined at 30°, Interpupillary Distance 48-75mm
 Compensation Free Trinocular Head,
 Inclined at 30°, Interpupillary Distance 55-75mm
Eye-piece
 WF10×/18
 P16×/11
Objective
 Achromatic Objective
 4×, 10×, 40×, 100×
Nosepiece
 Backward Quadruple Nosepiece
Stage
 Double Layer Mechanical Stage
 132×142mm/ 75×40mm
Focusing
 Coaxial Coarse & Fine Adjustment, Moving
 Range 24mm. Fine Division 0.004mm
Condenser
 Abbe NA 1.20 with Iris Diaphragm & Filter
 Abbe NA 1.25 with Iris Diaphragm & Filter
Illumination
 S-LED, Brightness Adjustable
 Halogen Lamp 6V/ 20W, Brightness
 Adjustable
Phase Contrast Kit
Dark Field Attachment
Polarization Attachment

Binocular & Trinocular Head inclined at 30° & 45° changeable without any modification in Sidentopf Head

various Cmos camera, HDMI camera & LCD monitor with inbuilt camera

fluorescence attachment



Fluorescence attachment

ISO 9001:2008 certified company



NILPA CONSULTANCY
 20-ORCHID PLAZA PREMISES, RAMKUWAR THAKUR ROAD,
 BESIDE MOVIE TIME THEATRE,
 DAHISAR (EAST), MUMBAI-400068-INDIA
 TEL: (+91) (22) 2828-2830 , 20891157
 Mobile: 9323271441 EMAIL: info@nilpaconsultancy.in
 nilpacon@yahoo.com

S 500

S120

nilpa



Viewing head

Monocular head, 30° inclined, 360° rotating
 Binocular head of articulated type, interpupillary distance 55-75mm, 30° inclined, 360° rotating
 Trinocular head of articulated type, interpupillary distance 55-75mm, 30° inclined, 360° rotating

Eyeiece

WF10x-18mm
 WF15x-13mm
 WF20x-11mm

Achromatic objective

DIN achromatic objective 4x/NA0.10
 DIN achromatic objective 10x/NA0.25
 DIN achromatic objective 40x/NA0.65
 DIN achromatic objective 60x/NA0.85
 DIN achromatic objective 100x(oil)/NA1.25

Analyzer

Plug-type analyzer group

Nosepiece

Triple nosepiece with positive click stopper
 Quadruple nosepiece with positive click stopper

Stage

Built-in mechanical stage 155mmx140mm with specimen holder, controlled by coaxial knobs at low position

Diameter

25mm 360° Rot table and Graduated in 1° increments, Mini-resolution when Using Vernier Scale, Center Adjustable

Condenser

N.A.1.25 Abbe Condenser with Iris Diaphragm
 N1.25 Abbe Condenser With polarize, can rotate, take the scale

Illuminator

Halogen bulb 6V/20W AC85-230V

Optional

Phase contrast set
 Dark field condenser set
 Photo adaptor

Viewing Head

Compensation Free Binocular Head, inclined at 30°
 Compensation Free Trinocular Head, inclined at 30°

Eyeiece

Wide Field Eyeiece WF10x/ 18
 Wide Field Eyeiece WF15x/ 11

Objective

Achromatic Objective 4x, 10x, 40x, 100x
 Plan Achromatic Objective 4x, 10x, 40x, 100x

Nosepiece

Quadruple Nosepiece

Stage

Double Layers Mechanical Stage 140x140mm/
 75x50mm

Condenser

NA 1.25 Abbe Condenser with Iris Diaphragm and Filter

Illumination

5-LED Illumination, Brightness Adjustable
 Halogen Lamp 6V/ 20W, Brightness Adjustable

Photo Attachment

Video Adapter

C Mount 1x, C Mount 0.5x

Filter

Blue Filter, Green Filter

Dark Field Attachment

Dark Field Condenser (Dry), Dark Field Condenser (Dry)

ISO 9001:2008
 certified company



NILPA CONSULTANCY

20-ORCHID PLAZA PREMISES, RAMKUWAR THAKUR ROAD,

BESIDE MOVIE TIME THEATRE,

DAHISAR (EAST), MUMBAI-400068-INDIA

TEL: (+91) (22) 2828-2830, 20891157

Mobile: 9323271441 EMAIL: info@nilpaconsultancy.in

nilpacon@yahoo.com

S 2000



S 300

**nilpa
mumbai**



Total Magnification

4x-1000x

Optical System

Infinite optical system

Viewing Head

Siedentopf binocular viewing head, inclined at

30°, 360° rotatable

Siedentopf trinocular viewing head, inclined at

30°, 360° rotatable

Built-in digital camera system

Eyeiece

WF 10x/18

WF 15x/16

Objective

Infinite plan achromatic objective 4x, 10x, 40x, 100x

Nosepiece

Backward quadruple nosepiece

Backward quintuple nosepiece

Focusing

Coaxial coarse & fine adjustment, range 22mm, fine division 0.002mm

Stage

Rectangular 230x150mm, cross travel 78x54mm, using low-positioned X/ Y coaxial control knob

Condenser

Abbe condenser NA1.25 with aperture diaphragm

Illumination

12V/20W Halogen lamp, brightness adjustable

S-LED Illumination, brightness adjustable

Optional

Photo attachment, Video attachment, Polarization set, Phase contrast kit, CMOS CAMERA, CCD CAMERA, IMAGE ANALYSIS SOFTWARE

Viewing Head

Compensation Free binocular head, 30° inclined,

Interpupillary 48-75mm

Compensation Free trinocular head, 30° inclined,

Interpupillary 48-75mm

Eyeiece

Wide Field Eyeiece WF 10x/18

Extra Wide Field Eyeiece EW10x/20 with Diopter

Adjustment

Objective

Infinite Semi-plan Achromatic Objectives 4x, 10x,

40x, 100x

Infinite Plan Achromatic Objectives 4x, 10x, 40x,

100x

Nosepiece

Quadruple Nosepiece

Stage

Double Layers Mechanical Stage 140mmx140mm/

75mmx50mm

Condenser

Sliding-in centerable condenser NA1.25

Focusing

Coaxial Coarse & Fine Adjustment, Moving Range

20mm

Illumination

S-LED Illumination, Brightness Adjustable

6V/ 20W Halogen Lamp, Brightness Adjustable

Optional

Phase Contrast Kit

Dark Field Attachment

Photo attachment, Video attachment, Polarization set,

CMOS CAMERA, CCD CAMERA, IMAGE ANALYSIS

SOFTWARE

ISO 9001:2008
certified company



NILPA CONSULTANCY
2B-SHOBHNA APARTMENT, K V ROAD OFF W S ROAD,
DAHISAR (EAST), MUMBAI-400068-INDIA
TEL: (+91) (22) 2828-2830 FAX: 28280397
Mobile: 9323271441 EMAIL: info@nilpaconsultancy.in

S 150

nilpa



Optical System	Finite Color Corrected Optical System
Viewing Head	30°inclined binocular viewing head; interpupillary distance: 50mm~75mm; single diopter adjustable
Eyeiece	High eye point wide filed WF10x/18mm, or plan eyepiece PL10X/18mm(with pointer for option)
Objective	Achromatic objective 4X/10X/40X/100X Plan achromatic objective 4X/10X/20X/40X/100X
Nosepiece	Quadruple nosepiece Quintuple nosepiece
Frame	Integrated design, coaxial focus system with upper limited and tension adjustment, coarse range: 28mm; fine precision: 0.002mm; provided with an adjustable tightness device to prevent slipping and a mechanical upper limit device
Stage	140mm*132mm double layers stage, moving range: 76mm*50mm, precision: 0.1mm
Condenser	N.A.1.25 ABBE Condenser and Iris Diaphragm
Illumination	Wide voltage 100V~240V, intensity adjustable by power switch, 3W LED, bulb center preset
upgrade	phase contrast, Fluorescence attachment HBO 100W / LED Fluorescence attachment, polarizing, cmos camera, HDMI camera & LCD Monitor

various Cmos camera, HDMI camera & LCD monitor with inbuilt camera

fluorescence attachment



Fluorescence attachment



HDMI CAMERA

**ISO 9001:2008
certified company**



NILPA CONSULTANCY
20-ORCHID PLAZA PREMISES, RAMKUWAR THAKUR ROAD,
BESIDE MOVIE TIME THEATRE,
DAHISAR (EAST), MUMBAI-400068-INDIA
TEL: (+91) (22) 2828-2830 , 20891157
Mobile: 9323271441 EMAIL: info@nilpaconsultancy.in
nilpacon@yahoo.com

HUND MICROSCOPES



MED-PRAX



NED -PRAX PLAN -LED



**NEDICUS
MEDICUS HF
MEDCUS HF PH**



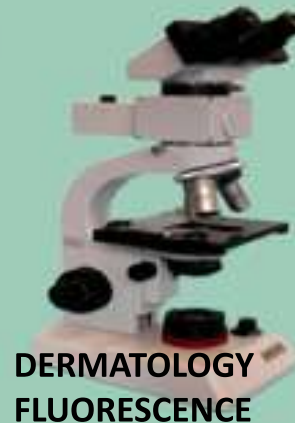
H 600 SERIES



H 600 LL & CCD CAMERA



FLUORESCENCE



**DERMATOLOGY
FLUORESCENCE**



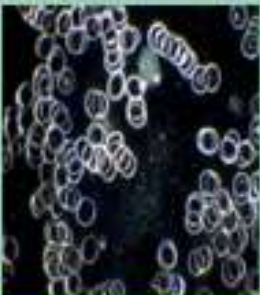
**WILOVERT STANDARD
WILOVERT FLUORESCENCE**



H 600 AM



**wiloskop
stereo zoom microscope**



**ISO 9001:2008
certified company**

NILPA CONSULTANCY

20-ORCHID PLAZA PREMISES, RAMKUWAR THAKUR ROAD,

BESIDE MOVIE TIME THEATRE,

DAHISAR (EAST), MUMBAI-400068-INDIA

TEL: (+91) (22) 2828-2830 , 20891157

Mobile: 9323271441 EMAIL: info@nilpaconsultancy.in

nilpacon@yahoo.com

UCMOS CAMERA

EYEPIECE MICROSCOPIC CAMERA

WITH COMPACT IMAGE ANALYSIS SOFTWARE



**Eyepiece Camera
& Straight trinocular tube**

cmos camera for c-mount & eyepiece type



C-mount & Eyepiece attachment



CMOS CAMERA

HDMI - USB SERIES - WIFI CAMERA

nilpa

USB 2.0 SERIES CAMERA

OTHER HARDWARE CONFIGURATION

Order Code	Sensor & Size(mm)	Pixel(μm)	G Sensitivity Dark Signal	FPS/Resolution	Binning	Exposure
USB CMOS 14MP	14M/MT9F002(C) 1/2.3"(5.73x4.60)	1.4x1.4	0.724v/lux-sec 65.3dB 35.5dB	1.8@4096x3288 10@2048x1644 27@1024x822	1x1 ,2x2 4x4	0.4ms-2000ms
USB CMOS 10MP	10M/MT9J003(C) 1/2.3"(5.98x4.59)	1.67x1.67	0.31v/lux-sec 65.2dB 34dB	1.9@3584x2748 8@1792x1374 27@896x684	1x1, 2x2, 4x4	0.4ms-2000ms
USB CMOS 9.0MP	9.0M/Special(C) 1/2.4"(5.83x4.37)	1.67x1.67	0.31v/lux-sec 65.2dB 34dB	1.9@3488x2616 8@1744x1308 27@872x654	1x1, 2x2, 4x4	0.4ms-2000ms
USB CMOS 14MP A	14M/Special(C) 1/2.5"(5.45x4.09)	1.67x1.67	0.31v/lux-sec 65.2dB 34dB	1.9@3264x2448 8@1600x1200 27@800x600	1x1, 2x2, 4x4	0.4ms-2000ms
USB CMOS 5.1MP	5.1M/MT9P006(C) 1/2.5"(5.70x4.28)	2.2x2.2	0.53 V/lux-sec 66.5dB 40.5dB	5@2592x1944 18@1280x960 60@640x480	1x1, 2x2, 4x4	0.294ms-2000ms
USB CMOS 3.1MP	3.1M/MT9T001(C) 1/2"(6.55x4.92)	3.2x3.2	1.0 V/lux-sec 61dB 43dB	8@2048x1536 22@1024x768 43@680x510	1x1, 2x2, 3x3	0.244ms-2000ms

Spectral Range 380-650nm (with IR-filter), for Monochromatic Camera, AR Is Used
 White Balance ROI White Balance/ Manual Temp-Tint Adjustment
 Color Rendering Technique Ultra Fine Color Engine
 Capture/Control SDK Windows/Linux/macOS/Android Multiple Platform SDK(Native C/C++, C#/VB.NET, Python, Java, DirectShow, Twain, etc);
 Recording System Still Picture and Movie
 Cooling System* Natural

OPERATING ENVIRONMENT

Operating Temperature -10 °C- 50 °C
 Storage Temperature -20 °C- 60 °C
 Operating Humidity 30-80%RH
 Storage Humidity 10-60%RH
 Power Supply DC 5V over PC USB Port

SOFTWARE ENVIRONMENT

Operating System Support Microsoft Windows XP / Vista / 7 / 8 / 10(32 & 64 bit)
 OS X (Mac OS X), Linux
 CPU: Equal to Intel Core2 2.8GHz or Higher
 Memory: 2GB or More
 PC Requirements USB port: USB 2.0 High-speed Port
 Display: 17" or Larger
 CD-ROM



NILPA CONSULTANCY
 20-ORCHID PLAZA PREMISES, RAMKUWAR THAKUR ROAD,
 BESIDE MOVIE TIME THEATRE,
 DAHISAR (EAST), MUMBAI-400068-INDIA
 TEL: (+91) (22) 2828-2830 , 20891157
 Mobile: 9323271441 EMAIL: info@nilpaconsultancy.in
 nilpacon@yahoo.com

HDMI - USB SERIES - WIFI CAMERA



USB 3.0 SERIES CAMERA

Order Code	Sensor & Size(mm)	Pixel(µm)	G Sensitivity Dark Signal	FPS/Resolution	Binning	Exposure	REMARKS
USB 3 CMOS 18MP	18M/AR1820(C) 1/2.3" (6.14x4.61)	1.25x1.25	0.62 V/lux-sec 65.8dB 36.3dB	5.6@4912x3684 18.1@2456x1842 32.2@1228x922	1x1, 2x2, 4x4	0.1ms-2000ms	ON REQUEST
USB 3 CMOS 16MP	16M/MN34120(C) 1/2.33" (6.18x4.66)	1.335x1.335	R: 2453LSB Gr: 2444LSB Gb: 1054LSB B: 996LSB	6.0@4648x3506 15.0@2304x1750 26.0@1536x1168	1x1, 2x2, 3x3	0.2ms-2000ms	ON REQUEST
USB 3 CMOS 16MP	16M/MN34230PLJ(C) 4/3" (17.6x13.3)	3.8x3.8	R: 1315LSB Gr: 2413LSB Gb: 2413LSB B: 1042LSB (Gain = 0dB)	6.0@4648x3506 15.0@2304x1750 30.0@1536x1168	1x1, 2x2, 3x3	0.06ms-15s	ON REQUEST
USB 3 CMOS 16MP	16M/MN34230ALJ(M) 4/3" (17.6x13.3)	3.8x3.8	A: 2650LSB B: 2650LSB C: 2650LSB D: 2650LSB (Gain = 0dB)	22@4640x3506 36@3840x2160 43@2304x1750 43@1920x1080 49@1536x1168	1x1, 1x1, 2x2, 2x2, 3x3	0.24ms-15s	ON REQUEST
USB 3 CMOS 14MP	14M/MT9F002(C) 1/2.3"(5.73x4.60)	1.4x1.4	0.724v/lux-sec 65.3dB 35.5dB	6.2@4096x3286 20.8@2048x1644 53.3@1024x822	1x1, 2x2, 4x4	0.4ms-2000ms	ON REQUEST
USB 3 CMOS 10MP	10M/MT9J003(C) 1/2.3"(5.98x4.58)	1.67x1.67	0.31v/lux-sec 65.2dB 34dB	7.2@3584x2746 24.5@1792x1372	1x1, 2x2, 4x4	0.38ms-2000ms	ON REQUEST
USB 3 CMOS 10MP	10M/MT9J003(M) 1/2.3"(5.98x4.58)	1.67x1.67	0.4v/lux-sec 65.2dB 34dB	7.2@3584x2746 24.5@1792x1372	1x1, 2x2, 4x4	0.38ms-2000ms	ON REQUEST
USB 3 CMOS 8.5MP	8.5M/Special(C) 1/2.5"(5.56x4.26)	1.67x1.67	0.31v/lux-sec 65.2dB 34dB	8.3@3328x2548 26.2@1664x1272	1x1, 2x2, 4x4	0.1ms-2000ms	ON REQUEST
USB 3 CMOS 5.1MP	5.1M/MT9P006(C) 1/2.5"(5.70x4.28)	2.2x2.2	1.76v/lux-sec 67.74dB 38.5dB	14.2@2560x1922 38.3@1280x960 101.2@640x480	1x1, 2x2, 4x4	0.1ms-2000ms	ON REQUEST
USB 3 CMOS 3.1MP	3.1M/AR0330(C) 1/3" (4.51x3.38)	2.2x2.2	1.9v/lux-sec 100dB 39dB	27.3@2048x1534 53.3@1024x770	1x1, 2x2	0.1ms-2000ms	ON REQUEST



GENERAL INFORMATION

Spectral Range	380-650nm (with IR-filter), for Monochromatic Camera, AR is Used
White Balance	ROI White Balance/ Manual Temp-Tint Adjustment
Color Rendering Technique	Ultra Fine Color Engine
Capture/Control SDK	Windows/Linux/macOS/ Android Multiple Platform SDK(Native C/C++, C#/VB.NET, Python, Java, DirectShow, Twain, etc);
Recording System	Still Picture and Movie
Cooling System*	Natural

OPERATING ENVIRONMENT

Operating Temperature	-10 °C- 50 °C
Storage Temperature	-20 °C- 60 °C
Operating Humidity	30 - 80%RH
Storage Humidity	10 - 60%RH
Power Supply	DC 5V over PC USB Port

SOFTWARE

Operating System	Support Microsoft Windows XP / Vista / 7 / 8 / 10(32 & 64 bit) OS X (Mac OS X), Linux CPU: Equal to Intel Core2 2.8GHz or Higher Memory: 2GB or More
PC Requirements	USB port: USB 2.0 High-speed Port Display: 17" or Larger CD-ROM

NILPA CONSULTANCY
20-ORCHID PLAZA PREMISES, RAMKUWAR THAKUR ROAD,
BESIDE MOVIE TIME THEATRE,
DAHISAR (EAST), MUMBAI-400068-INDIA
TEL: (+91) (22) 2828-2830, 20891157
Mobile: 9323271441 EMAIL: info@nilpaconsultancy.in
nilpacon@yahoo.com

HDMI - USB SERIES - WIFI CAMERA

nilpa

HDMI - USB SERIES CAMERA

Order Code	Sensor & Size(mm)	Pixel(µm)	G Sensitivity Dark Signal	FPS/Resolution	Binning	Exposure
HDMI 1080A	1080P/Sony IMX290(C) 1/2.8"(5.57x4.13)	2.9x2.9	1300 mv with 1/30s 0.15 mv with 1/30s	26@1920x1080 (HDMI) 26@1920x1080 (USB)	1x1	0.036ms-8s
HDMI 1080B	1080P/Sony IMX185(C) 1/1.9"(7.20x4.50)	3.75x3.75	1120 mv with 1/30s 0.15 mv with 1/30s	26@1920x1080 (HDMI) 26@1920x1080 (USB)	1x1	0.036ms-4s
HDMI 1080PHA	1080P/Sony IMX236(C) 1/2.8"(5.38x3.02)	2.8x2.8	510 mv with 1/30s 0.15 mv with 1/30s	30@1920x1080 (HDMI) 30@1920x1080 (USB)	1x1	0.1ms-999ms

Camera Features



HDMI	HDMI Output
USB Mouse	USB Mouse for the Ctrl of the HDMI Mode
USB Video	USB Video for the PC
LED	Power On Indicator
SD	SD Card Slot
DC 12V	12V/1A Power In
ON/OFF	Power On/Off Switch

Software Features

UI Operation	With USB Mouse for HDMI Mode Control
Image Capture	High Speed in SD Card(8G)
Video Record	1080P 26fps in SD Card(8G)
Camera Control Panel	Including Exposure, Gain, White Balance, Color Adjustment and Sharpness Control
Toolbar	Including Zoom, Mirror, Comparison, Freeze, Cross, Browser Function
White Balance	Auto White Balance, Manual White Balance and ROI White Balance
Color Technique	Ultra-Fine Color Engine (USB2.0)
Capture/Control SDK	Standard UVC for Windows/Linux/Mac(USB2.0)
Recording System	Still Picture or Movie (HDMI) or USB)

Operating System

Operating System	Microsoft® Windows® XP /Vista 7/8/8.1/10(32 & 64 bit) OSx(Mac OS X) Linux CPU: Equal to Intel Core2 2.8GHz or Higher Memory: 4GB or More
PC Requirements	USB Port: USB2.0 High-speed Port Display: 19" or Larger CD-ROM

Working Environment

Operating Temperature(in Centidegree)	-10- 50
Storage Temperature(in Centidegree)	-20- 60
Operating Humidity	30-80%RH
Storage Humidity	10-60%RH
Power Supply	DC 12V/2A Adaptor

Camera Dimension

Width x Depth x Height	78 mm (3.07") x 70 mm (2.76") x 92mm (3.62")
Shipping Weight	0.47 kg (1.0lbs)



NILPA CONSULTANCY
20-ORCHID PLAZA PREMISES, RAMKUWAR THAKUR ROAD,
BESIDE MOVIE TIME THEATRE,
DAHISAR (EAST), MUMBAI-400068-INDIA
TEL: (+91) (22) 2828-2830 , 20891157
Mobile: 9323271441 EMAIL: info@nilpaconsultancy.in
nilpacon@yahoo.com

HDMI - USB SERIES - WIFI CAMERA



WIFI - USB SERIES CAMERA

Order Code	Sensor & Size(mm)	Pixel(μm)	G Sensitivity Dark Signal	FPS/Resolution	Binning	Exposure
WIFI + USB CAMERA	720P/MT9P001(C) 1/2.5"(5.63x3.17)	2.2x2.2	0.53V/lux-sec 66.5dB 40dB	30@1280x720	2x2	0.21ms-200ms
TECHNICAL SPECIFICATIONS						
Output Interface	USB or WIFI(on Camera Switch)					
Spectral Range	380-650nm (with IR-filter)					
White Balance	Whole Area White Balance/ Manual Temp Tint Adjustment/NA for Monochromatic Sensor					
Color Rendering Technique	Ultra Fine Color Engine					
Capture/Control SDK	Windows/Linux/macOS/Android Multiple Platform SDK(Native C/C++, C#/VB.NET, Python, Java, DirectShow, Twain, etc);					
Recording System	Still Picture and Movie					
Maximum Connected Device	6-7					
Cooling System*	Natural					
ENVIRONMENTAL SPECIFICATIONS						
Operating Temperature	-10? - 50?					
Storage Temperature	-20? - 60?					
Operating Humidity	30-80%RH					
Storage Humidity	10-60%RH					
Power Supply	USB Power Adaptor, Not Recommend for PC USB Port					
SYSTEM REQUIREMENTS						
Operating System	Support Microsoft Windows XP / Vista / 7 / 8 / 10 (32 & 64 bit) IOS/iPAD or iPhone, Android/iPAD and Phone					
PC Requirements	CPU: Equal to Intel Core 2 2.8GHz or Higher					
	Memory: 2GB or More					
	WIFI Adapter with DHCP Enabled					
	Display: 17" or Larger					
PAD	iPAD or PAD with Android System					
Mobile Phone	iPhone or Smart Phone with Android System					



WATEC CCD CAMERA



NILPA CONSULTANCY

20-ORCHID PLAZA PREMISES, RAMKUWAR THAKUR ROAD,
BESIDE MOVIE TIME THEATRE,
DAHISAR (EAST), MUMBAI-400068-INDIA
TEL: (+91) (22) 2828-2830, 20891157
Mobile: 9323271441 EMAIL: info@nilpaconsultancy.in
nilpacon@yahoo.com